

Quick Start Guide

Munin Quick Start Guide

© 2020 Novator Solutions AB

All rights reserved. No parts of this work may be reproduced in any form or by any means - graphic, electronic, or mechanical, including photocopying, recording, taping, or information storage and retrieval systems - without the written permission of the publisher.

Information contained herein may be subject to change without prior notice. For the latest version, refer to www.novatorsolutions.se. Novator Solutions reviews this document carefully for technical accuracy; however, NOVATOR SOLUTIONS MAKES NO EXPRESS OR IMPLIED WARRANTIES AS TO THE ACCURACY OF THE INFORMATION CONTAINED HEREIN AND SHALL NOT BE LIABLE FOR ANY ERRORS.

Please read the End User License Agreement (displayed before installing the software) before using this product.

LabVIEW™ is a trademark of National Instruments. Microsoft® and Windows® registered trademarks of Microsoft Corporation.

This publication is independent of National Instruments and Microsoft Corporation, which are not affiliated with the publisher or the author, and do not authorize, sponsor, endorse or otherwise approve this publication.

Revision: 3.0.0

Printed: June 2020 in Sweden

Quick Start Guide

Administrative user rights are required when running the mservsetup.exe programs. Wideband channel recording requires that you start the server with elevated user access (Run as administrator).

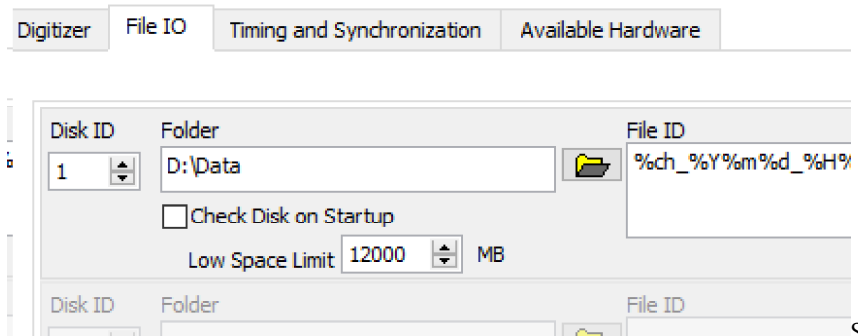
Setup Munin Server

1. Install and configure Munin Server as instructed in the user manual.
2. Configure Munin Server for setup test: open menu File >> System Settings... and enter the following parameters:
 - a. Network >> Connections: MYCMDIP = 127.0.0.1
 - b. Network >> FFT: MYFFTIP = 127.0.0.1
 - c. RTSA>> General: RTSAENABLED = true
RTSA>> General: RTSACH = IF1/A
 - d. RTSA >> Streaming as in Figure 1 below.

	Value	Comments
CONNPERIP	1	Number of simultaneous RTSA clients
IPPERPERSISTENCE	127.0.0.1	IP address for Persistence data access
IPSPECTROGRAM	127.0.0.1	IP address for Spectrogram data access
IPSPECTRUM	127.0.0.1	IP address for Spectrum data access
PORTPERSISTENCE	12233	TCP/IP port for persistence data transmission
PORTSPECTROGRAM	12234	TCP/IP port for Spectrogram data transmission
PORTSPECTRUM	12235	TCP/IP port for Spectrum data transmission
RATEPERSISTENCE	5	Persistence update rate [frames/s]
RATESPECTROGRAM	26	Spectrogram update rate [lines/s]
RATESPECTRUM	10	Spectrum update rate [frames/s]
SPANSPECTROGRAM	10000	Spectrogram span [dBm]

Figure 1: RTSA Configuration for localhost Test.

3. Click OK to close the configuration dialog.
4. Open menu File >> Hardware Settings
 - a. Select File IO tab, make sure "Folder" points to an existing folder, preferably in a RAID disk.



- b. Click OK to close the hardware dialog.
5. Close the Server program.

Setup and Test Connection with Munin Control

6. Install Munin Control Software (see [Service Manual](#)¹³⁴) in the same computer as the Server.
7. Configure Munin Control for setup test: open menu File >> System Settings... and enter the following parameters:
 - a. Network >> Connections: MYCMDIP = 127.0.0.1
 - b. Network >> Connections: HOSTIP = 127.0.0.1
 - c. Network >> FFT: MYFFTIP = 127.0.0.1
8. Click OK to close the configuration dialog.
9. Restart Munin Control.
10. Start Munin Server. Change to the "Logs" tab on the user interface.
11. In Server, execute command Operate >> Go On-Line
12. Once you see the text Online in the TCP Traffic Log listing on the Logs tab, the Munin Control should start to send commands to the Server, these commands show up in the Traffic Log (see Figure 2 below).

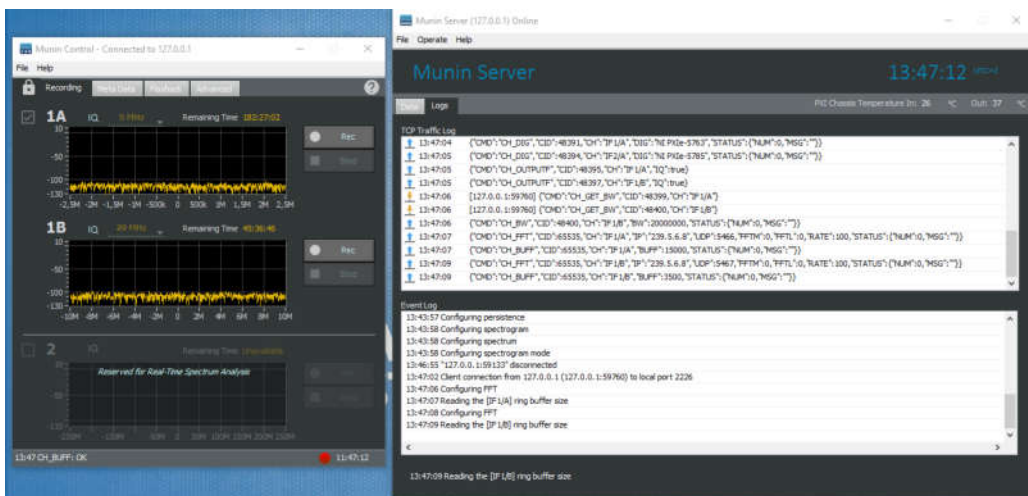


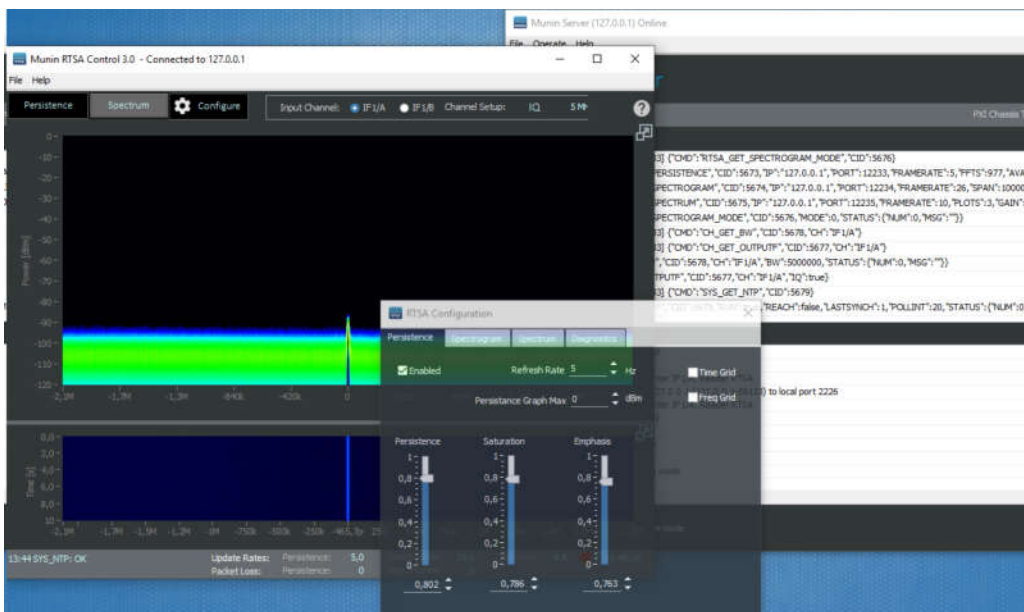
Figure 2: Munin Server and Control ready.

NOTE: If the FFT spectra show data only for one second, and disappear for 9 seconds, your hardware license has not been activated. To activate license, refer to the section on "Licensing" in Munin Server User Manual.

Test Munin RTSA Control

Applicable to systems with the RTSA option only

13. Install Munin RTSA Control Software (see [Service Manual](#)¹³⁷) in the same system as the Server.
14. Configure Munin RTSA Control for setup test: open menu File >> System Settings... and enter the following parameters:
 - a. Network >> Connections: MYCMDIP = 127.0.0.1
 - b. Network >> Connections: HOSTIP = 127.0.0
15. Click OK to close the configuration dialog.
16. Restart Munin RTSA Control if requested.
17. Munin Server should show that a client connection has been made, and Munin RTSA Control should start showing data as in Figure 3 below. If Munin RTSA Control shows that the connection is made (Window title "Connected to 127.0.0.1"), but no data is shown, make sure that the data flows are enabled.
 - a. Click "Configure" in the RTSA Control toolbar
 - b. Make sure Enabled is checked and refresh rate is above 0.
 - c. Adjust the values in the three display control sliders (Persistence/Saturation/Emphasis) to see if the graph shows up.
 - d. Make sure the Spectrogram and Spectrum streams are enabled as well (checkbox in respective tab).
 - e. Switch to the Spectrum display by clicking the corresponding button in the RTSA Control toolbar.
18. Close Munin RTSA Control



Test Recording and Replay

1. Start Munin Control if it is closed.
2. Make sure Munin Server is On-Line
3. Press the Rec button on channel 1A. "Recording" text should be blinking on the corresponding FFT graph. Also, Munin Server Event Log should indicate that channel recording has been initiated (see Figure 3 below).

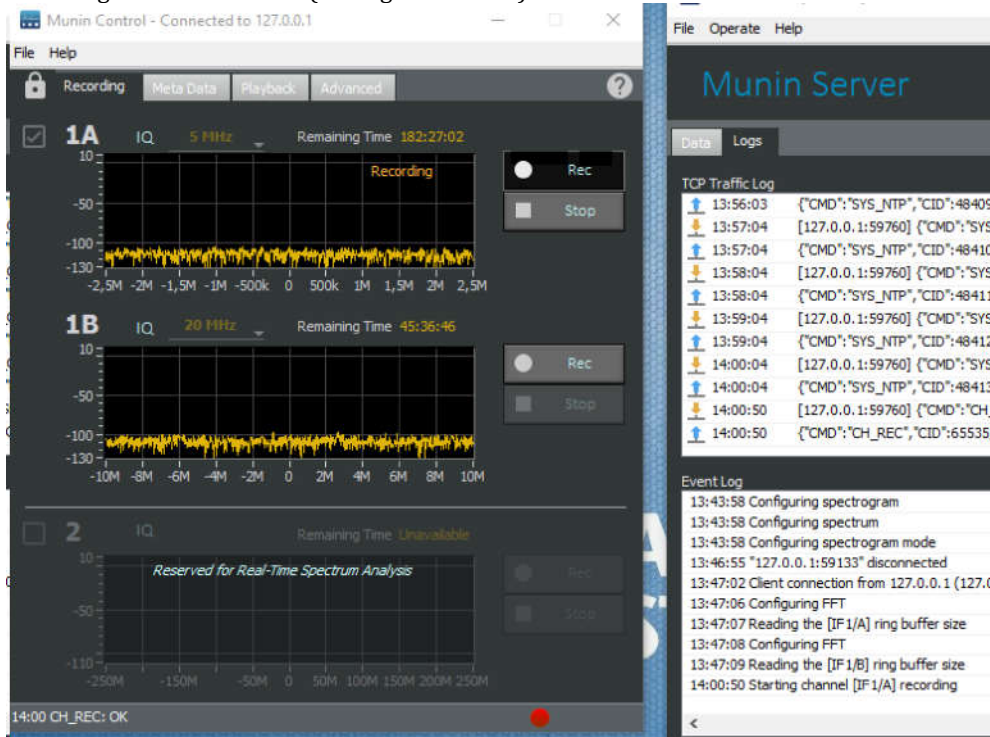
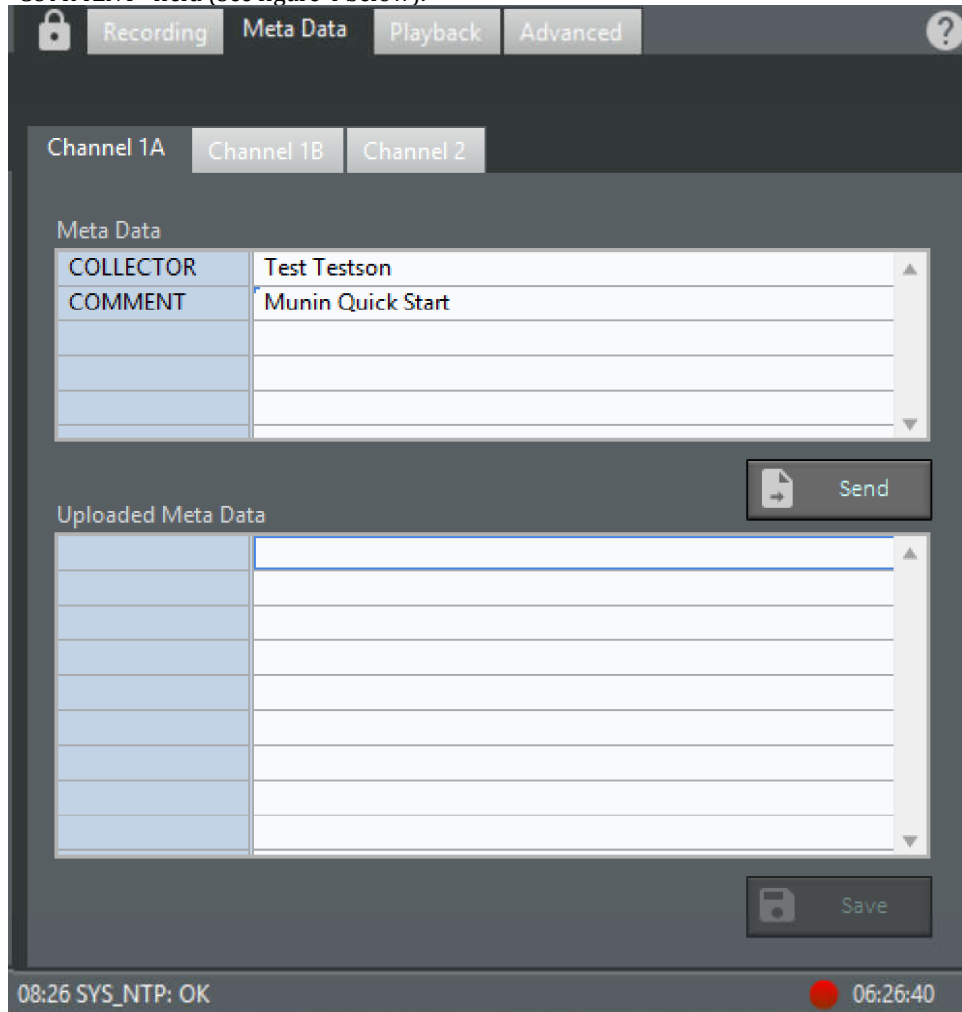



Figure 3: Recording Initiated.

4. Press Stop on channel 1A. Two buttons appear: "Meta Data" and "Cancel". Press "Meta Data".

- The Meta Data tab is opened. Enter your name in the "COLLECTOR" field, and a comment in "COMMENT" field (see figure 4 below).



- Press "Send"
- Once the meta data has been sent to the server, a confirmation is sent back to Munin Control with the current data field values.
- Press "Save" to complete file save. The "Recording" tab opens up and the program is ready for a new recording.
- Test the file: open tab "Playback". The client will automatically send a command to request a list of newest recordings in the "Recent Files" drop down list. If your recording is not there, press the refresh button . The Meta Data for the selected file is automatically requested

from the server, and you should see the information from your recording show up here.

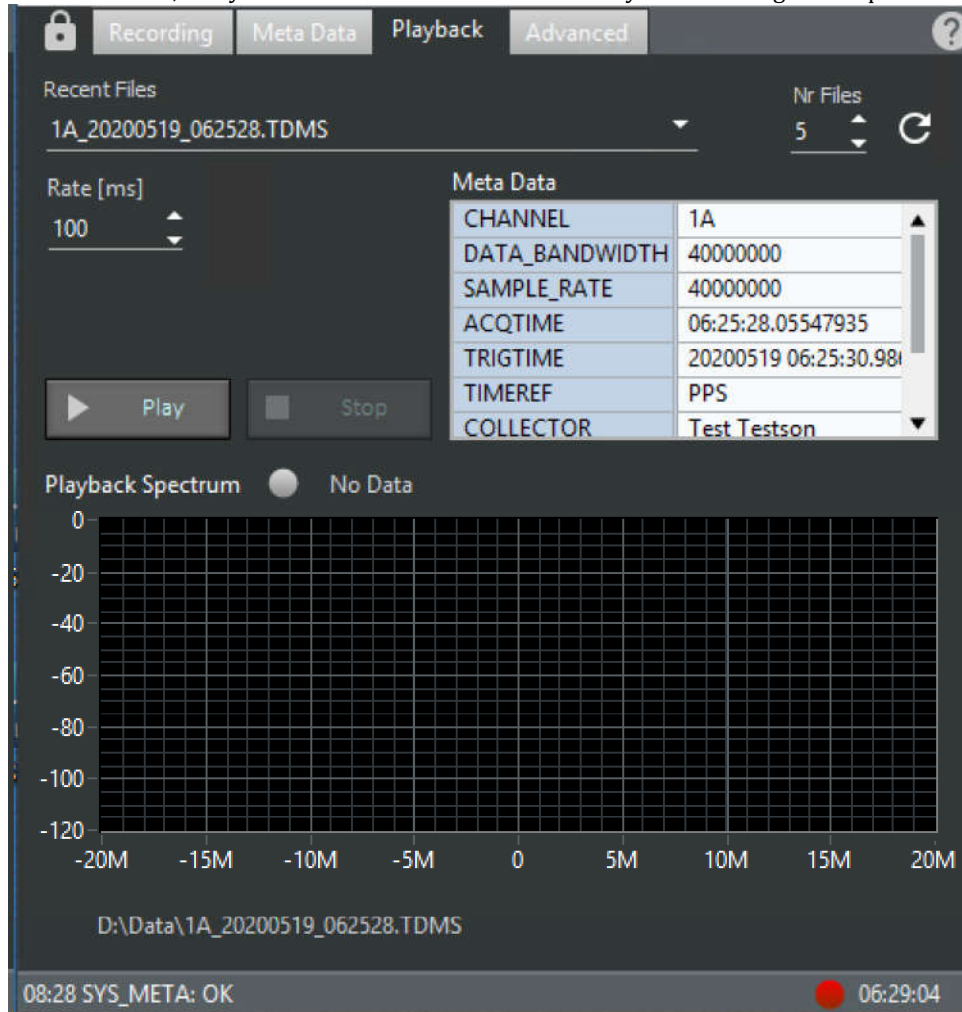


Figure 4: Playback.

- Press the Play button. The program should show the acquired data. Note that a 1024 point spectrum is calculated from the data at the time interval indicated by "Rate", and the data between the calculations is not shown.

NOTE: If the server software is not running with a license activated, the playback spectrum will flash only sporadically. This is expected behaviour. Refer to section on licensing for more information.